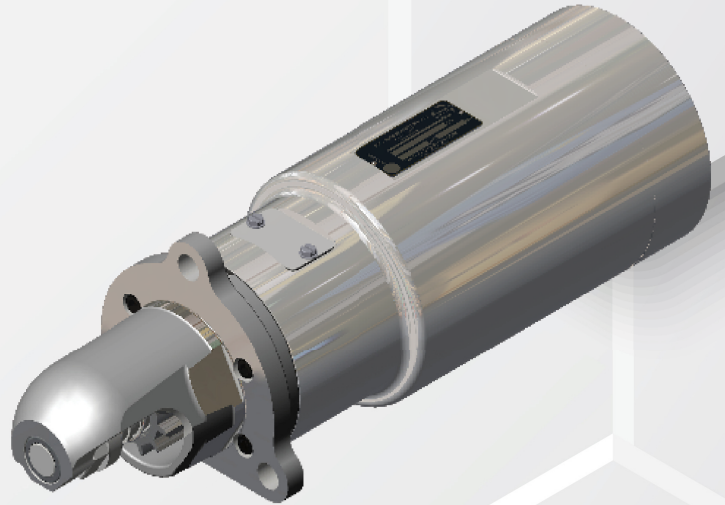
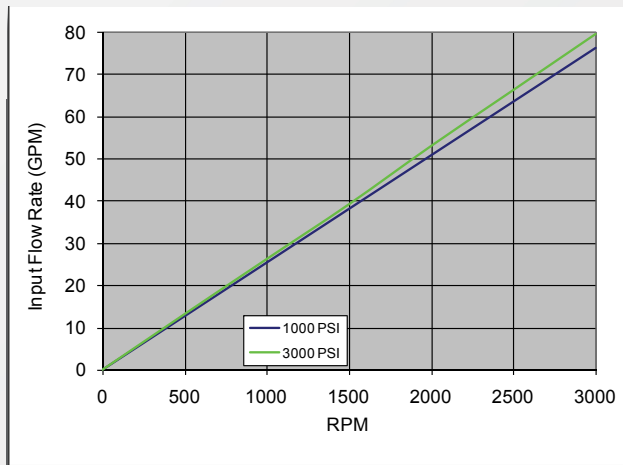


Product Specifications

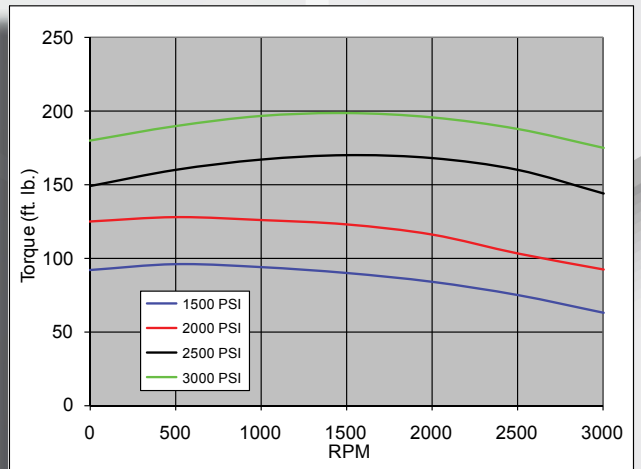
Rotation:	CW / CCW
Motor housing:	Aluminum
Pinion housing:	Ductile Iron
Barrel:	Ductile Iron
Piston:	Steel Alloy
Number of pistons:	9
Displacement:	5.88in ³ /REV
Speed range:	0-3000 RPM
Drive type:	Inertia
Maximum working pressure:	3000 PSI
Duty cycle:	Intermittent
Maximum Torque:	200 Ft.-lbs.
Weight:	46.0 lbs
Overall volumetric efficiency:	92%
Recommended fluid:	Red hydraulic fluid (MIL-H-5606)
Inlet Port:	SAE-12
Outlet Port:	SAE-12
Available Flanges:	SAE-1, SAE-2, SAE-3, Custom
Service Kit:	KT-207838
Barrel Kit:	KT-208829



Flow vs. Speed



Torque vs. Speed



General Dimensions- Part # E1-12C2200-30200 shown below

